

# 检测报告 Test Report

报告编号 ECL01G002618001E  
Report No. ECL01G002618001E

第 1 页 共 6 页  
Page 1 of 6

申请单位 鄄城泰瑞化工有限公司  
Applicant JUANCHENG TAIRUI CHEMICAL CO., LTD  
地 址 山东省菏泽市鄄城县鄄十五路  
Address JUANCHENG JUAN 15TH RD HEZE CITY, SHANDONG PROVINCE

以下测试之样品及样品信息由申请者提供并确认

The following sample(s) and sample information was/were submitted and identified by/on the behalf of the client

样品名称 泰瑞牌绝缘树脂漆加稀释剂  
Sample Name Tairui brand insulating resin varnish and diluent  
样品接收日期 2014.07.07  
Sample Received Date Jul. 7, 2014  
样品检测日期 2014.07.07-2014.07.12  
Testing Period Jul. 7, 2014 to Jul. 12, 2014

检测要求 根据客户要求, 对所提交样品中的铅(Pb), 镉(Cd), 汞(Hg), 六价铬(Cr(VI)), 多溴联苯(PBBs), 多溴二苯醚(PBDEs)进行测试。  
Test Requested As specified by client, to test Lead (Pb), Cadmium (Cd), Mercury (Hg), Hexavalent Chromium(Cr(VI)), Polybrominated Biphenyl(PBBs), Polybrominated Diphenyl Ethers(PBDEs) in the submitted sample(s).

检测依据/检测结果 请参见下页。  
Test Method/Test Result(s) Please refer to the following page(s).

主 检  
Tested by Chen Lijuan  
批 准  
Approved by Su Hongwei

审 核  
Reviewed by Chen Lijuan  
日 期  
Date 2014.07.12



Su Hongwei  
Senior Laboratory Manager

No. R108727349

深圳市华测检测技术股份有限公司上海分公司  
Centre Testing International Co., Ltd. Shanghai Branch

上海市浦东新区新金桥路1996号  
No.1996, New Jinqiao Road, Pudong District, Shanghai, China

# 检测报告 Test Report

报告编号 ECL01G002618001E  
Report No. ECL01G002618001E

第 2 页 共 6 页  
Page 2 of 6

## 检测依据 Test Method

测试项目 Test Item(s)	测试方法 Test Method	测试仪器 Measured Equipment(s)
铅(Pb) Lead (Pb)	IEC 62321-5:2013 Ed.1.0	ICP-OES
镉(Cd) Cadmium (Cd)	IEC 62321-5:2013 Ed.1.0	ICP-OES
汞(Hg) Mercury (Hg)	IEC 62321-4:2013 Ed.1.0	ICP-OES
六价铬(Cr(VI)) Hexavalent Chromium(Cr(VI))	IEC 62321:2008 Ed.1 Annex C	UV-Vis
多溴联苯(PBBs) Polybrominated Biphenyl(PBBs)	IEC 62321:2008 Ed.1 Annex A	GC-MS
多溴二苯醚(PBDEs) Polybrominated Diphenyl Ethers(PBDEs)	IEC 62321:2008 Ed.1 Annex A	GC-MS

## 检测结果 Test Result(s)

测试项目 Test Item(s)	结果 Result	方法检测限 MDL
铅(Pb) Lead (Pb)	N.D.	2 mg/kg
镉(Cd) Cadmium (Cd)	N.D.	2 mg/kg
汞(Hg) Mercury (Hg)	N.D.	2 mg/kg
六价铬(Cr(VI)) Hexavalent Chromium (Cr(VI))	N.D.	2 mg/kg

测试项目 Test Item(s)	结果 Result	方法检测限 MDL
<b>多溴联苯(PBBs) Polybrominated Biphenyl(PBBs)</b>		
一溴联苯 Monobromobiphenyl	N.D.	5 mg/kg
二溴联苯 Dibromobiphenyl	N.D.	5 mg/kg
三溴联苯 Tribromobiphenyl	N.D.	5 mg/kg
四溴联苯 Tetrabromobiphenyl	N.D.	5 mg/kg
五溴联苯 Pentabromobiphenyl	N.D.	5 mg/kg
六溴联苯 Hexabromobiphenyl	N.D.	5 mg/kg
七溴联苯 Heptabromobiphenyl	N.D.	5 mg/kg
八溴联苯 Octabromobiphenyl	N.D.	5 mg/kg
九溴联苯 Nonabromobiphenyl	N.D.	5 mg/kg
十溴联苯 Decabromobiphenyl	N.D.	5 mg/kg

# 检测报告 Test Report

报告编号 ECL01G002618001E  
Report No. ECL01G002618001E

第 3 页 共 6 页  
Page 3 of 6

测试项目 Test Item(s)	结果 Result	方法检测限 MDL
<b>多溴二苯醚 (PBDEs) Polybrominated Diphenyl Ethers(PBDEs)</b>		
一溴二苯醚 Monobromodiphenyl ether	N.D.	5 mg/kg
二溴二苯醚 Dibromodiphenyl ether	N.D.	5 mg/kg
三溴二苯醚 Tribromodiphenyl ether	N.D.	5 mg/kg
四溴二苯醚 Tetrabromodiphenyl ether	N.D.	5 mg/kg
五溴二苯醚 Pentabromodiphenyl ether	N.D.	5 mg/kg
六溴二苯醚 Hexabromodiphenyl ether	N.D.	5 mg/kg
七溴二苯醚 Heptabromodiphenyl ether	N.D.	5 mg/kg
八溴二苯醚 Octabromodiphenyl ether	N.D.	5 mg/kg
九溴二苯醚 Nonabromodiphenyl ether	N.D.	5 mg/kg
十溴二苯醚 Decabromodiphenyl ether	N.D.	5 mg/kg

**测试样品/部位描述** 混测, 无色透明液体: 黄色液体=10: 8(质量比)  
**Tested Sample/Part Description** Mixed test, colorless transparent liquid: yellow liquid=10:8(by weight)

**注释:** 对于检测铅, 镉, 汞之样品已完全溶解。  
根据客户要求, 对样品进行混合测试, 测试结果不代表混合测试样品中任何一种单一材质的含量。  
-N.D. = 未检出 (小于方法检测限)

-mg/kg= ppm = 百万分之几

**Note:** **The sample(s) had been dissolved totally tested for Lead, Cadmium, Mercury. As specified by client, the test was conducted by mixing several samples together. The result(s) shown on this report may be different from the content of any homogeneous material.**

-MDL = Method Detection Limit

-N.D. = Not Detected (<MDL)

-mg/kg = ppm = parts per million

**备注:** 报告编号中“E”表示此报告为中英文对照版本。

**Remark:** **The end sign of report number E represents the bilingual version.**

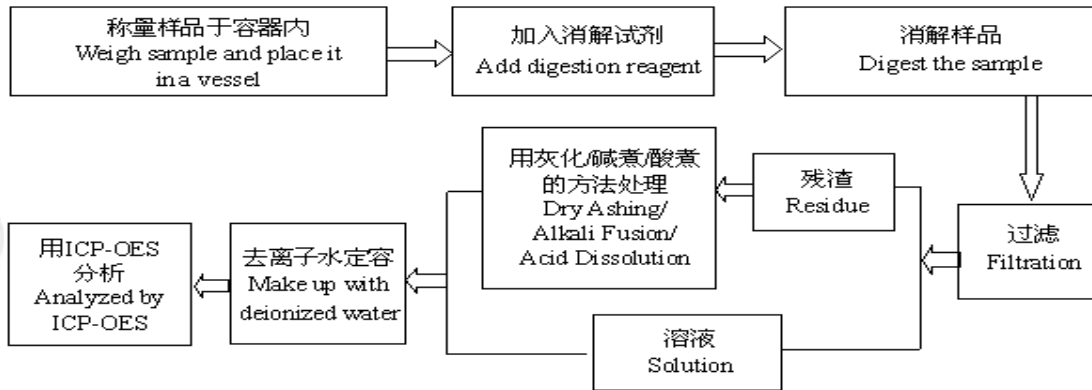
# 检测报告 Test Report

报告编号 ECL01G002618001E  
Report No. ECL01G002618001E

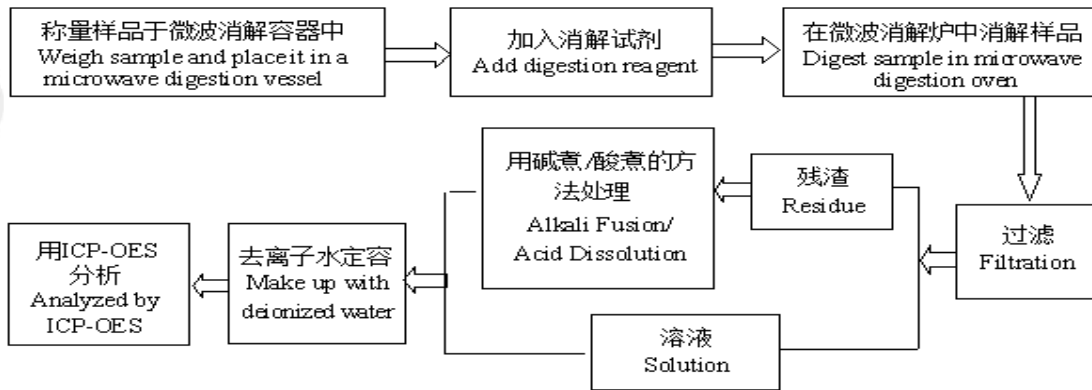
第 4 页 共 6 页  
Page 4 of 6

## 检测流程 Test Process

### 1. 镉(Cd), 铅(Pb) Cadmium (Cd), Lead (Pb)



### 2. 汞(Hg) Mercury (Hg)

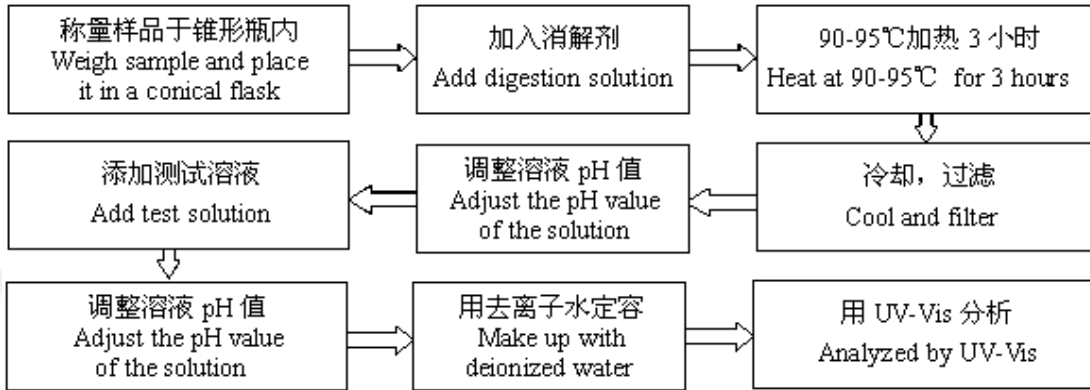


# 检测报告 Test Report

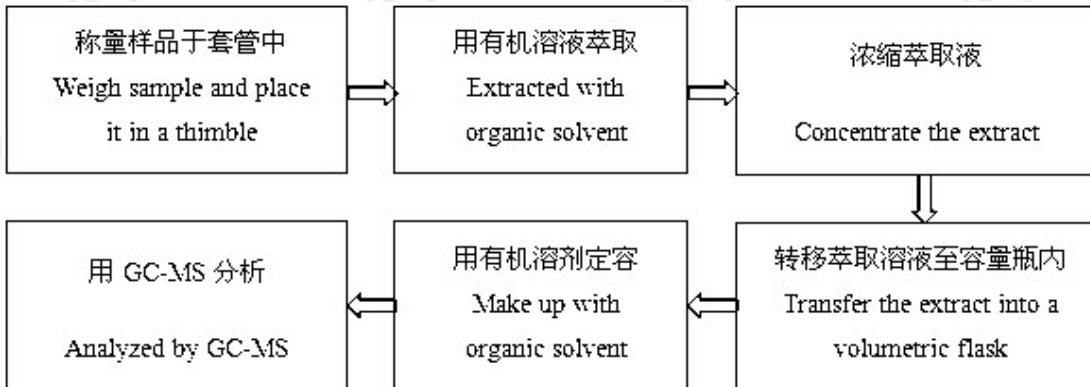
报告编号 ECL01G002618001E  
Report No. ECL01G002618001E

第 5 页 共 6 页  
Page 5 of 6

### 3. 六价铬 (Cr(VI)) Hexavalent Chromium(Cr(VI))



### 4. 多溴联苯(PBBs), 多溴二苯醚(PBDEs) Polybrominated Biphenyl(PBBs) , Polybrominated Diphenyl Ethers(PBDEs)



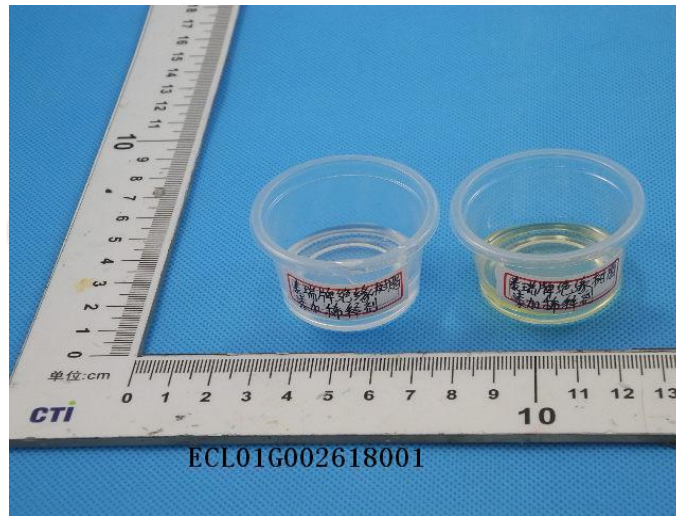


# 检测报告 Test Report

报告编号 ECL01G002618001E  
Report No. ECL01G002618001E

第 6 页 共 6 页  
Page 6 of 6

## 样品图片 Photo(s) of the sample(s)



\*\*\*报告结束\*\*\*  
\*\*\* End of report \*\*\*

检测报告无批准人签字及“报告专用章”无效，本报告检测结果仅对受测样品负责。未经CTI书面同意，不得部分复制本报告。

The test report is effective only with both signature and specialized stamp. The result(s) shown in this report refer only to the sample(s) tested. Without written approval of CTI, this report can't be reproduced except in full.